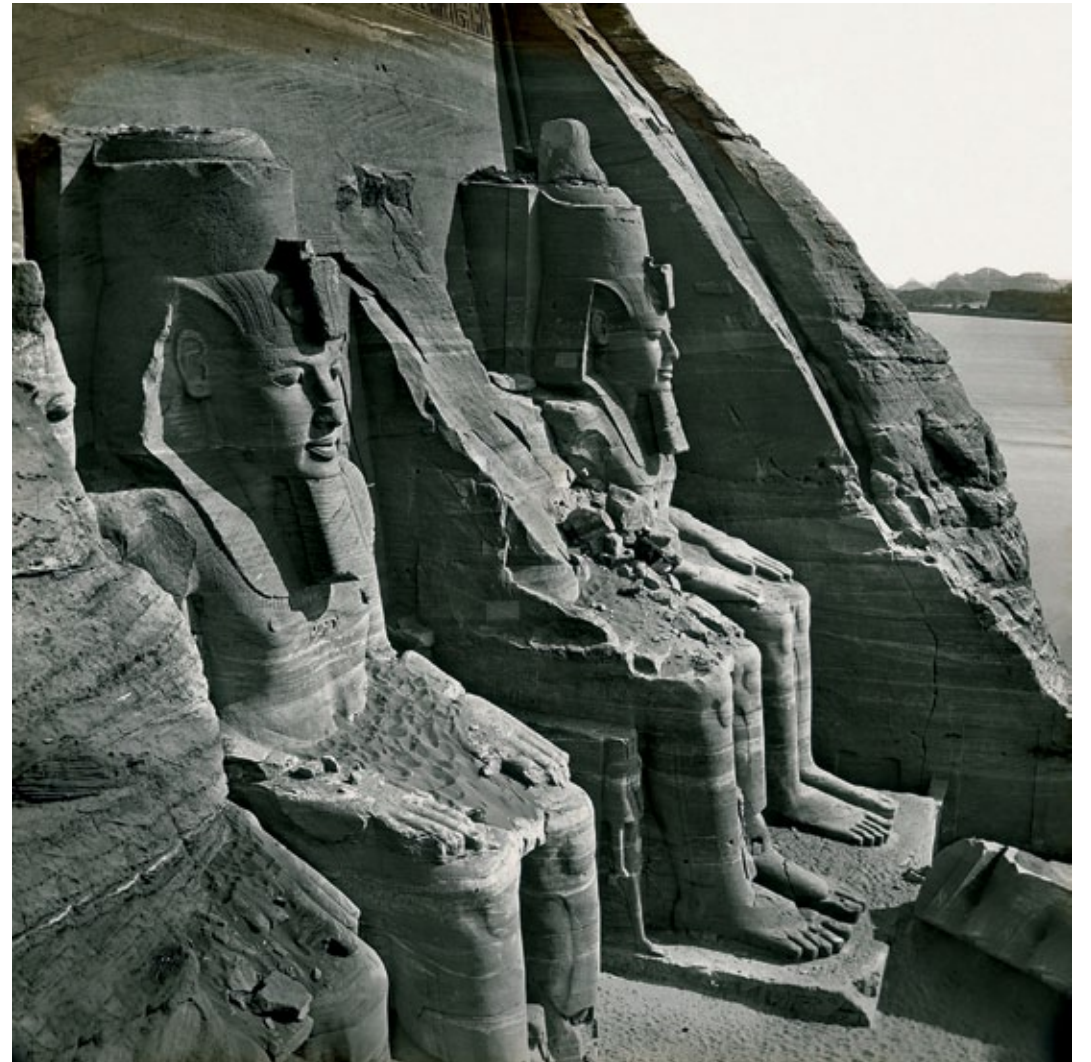


Charlotte Fiell

# *Memories of a Lost World*

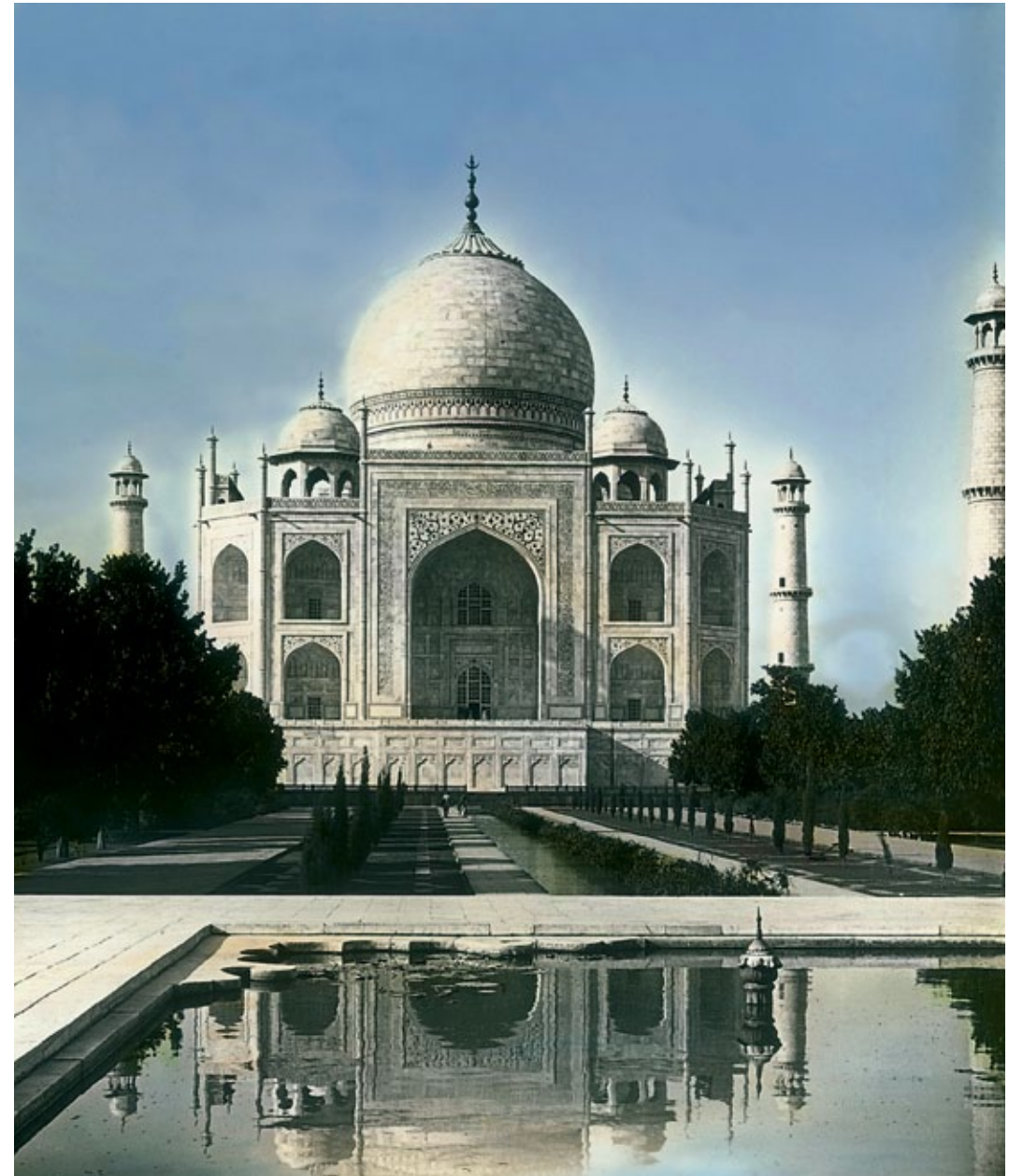
**Travels through the Magic Lantern**







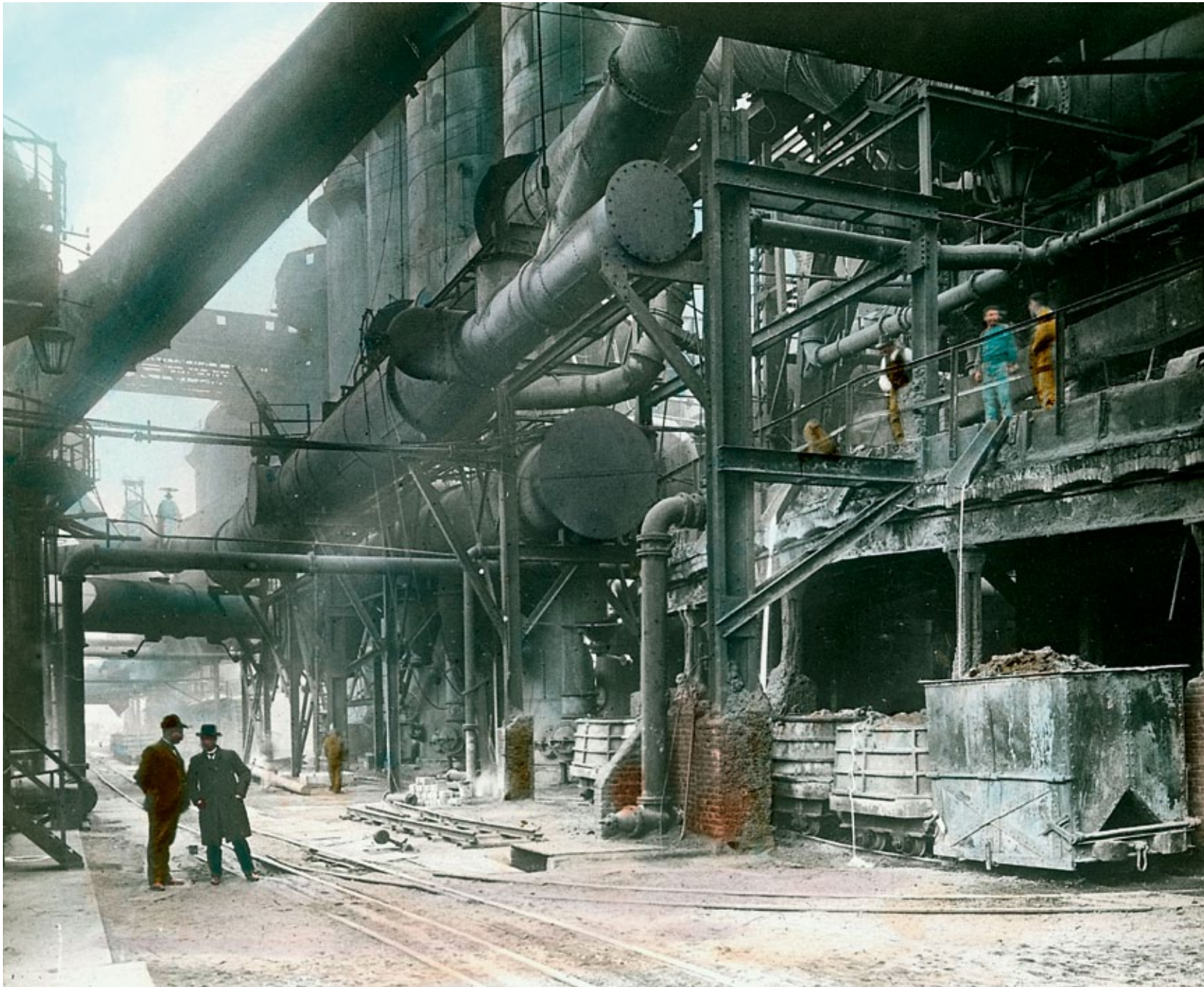
INDIA Carpet weaving, Baranagar, India (Church of England Zenana Missionary Society)



Rear view of the Taj Mahal, India, 1890s (Church of England Zenana Missionary Society)



MANDALAY, BURMA  
(MYANMAR)



GERMANY "Union" blast furnace, Dortmund, 1890s

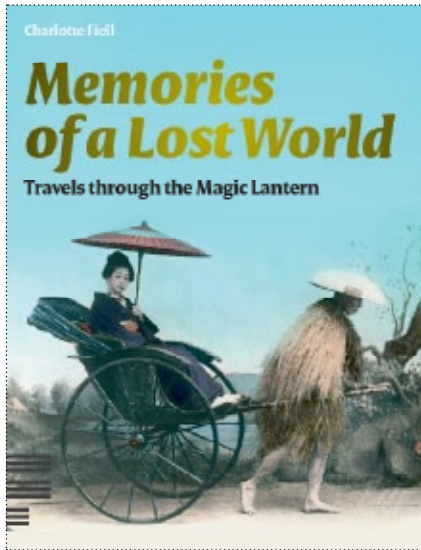


Workers at "Union" blast furnace, Dortmund, 1890s



SOUTH AFRICA Zulu girl, c.1900

## Photography



## Memories of a Lost World: Travels through the Magic Lantern

Charlotte Fiell

Flexi-cover with flaps

Format: 22 × 17 cm (8 5/8 × 6 5/8 in.)

704 pages, 900 illustrations

Recommended Retail Price:

£24.95 | €29.95 | US \$45.00

Trilingual text

English/French/German edition

English cover – ISBN 978-1-906863-07-4

French cover – ISBN 978-1-906863-36-4

German cover – ISBN 978-1-906863-37-1

**September 2010**

### About the author

Charlotte Fiell studied at the British Institute (Florence), Camberwell School of Arts & Crafts (London) and Sotheby's Educational Studies (London). Together with her husband, Peter, she has written and edited over 30 internationally bestselling books on design.

### Target audience:

Photography lovers  
Romantic/Nostalgia market  
Pre-cinema enthusiasts  
Magic Lantern society members  
Historians  
Geographers  
Travellers  
All those interested in early photography  
Anyone interested in social anthropology

### Travel to a forgotten world

*Memories of a Lost World: Travels through the Magic Lantern* takes you on a fascinating journey back through time to a pre-globalized world where regional customs and national cultures were as distinctive as they were diverse. From the bustling streets of Victorian London and the ruins of ancient Egypt to the temples of Japan and the tribesmen of New Guinea, this publication explores the world through a captivating collection of over 800 magic lantern slide images.

### A trip through the magic lantern

From the 1870s to the 1930s, photographic magic lantern slide shows were a popular, entertaining and educational way for people to learn about the world beyond their own shores. From Cairo and Delhi to Adelaide and Cape Town, intrepid photographers travelled to all corners of the world to document its peoples and customs. For the first time these images have been brought together in a single publication and the result is a beautiful yet poignant echo of a lost world that at the same time conveys a powerful sense of shared humanity.

### History through images

*Memories of a Lost World: Travels through the Magic Lantern* is an important source of primary historical information, which precisely and beautifully documents what the world was like before the advent of television and mass-travel.